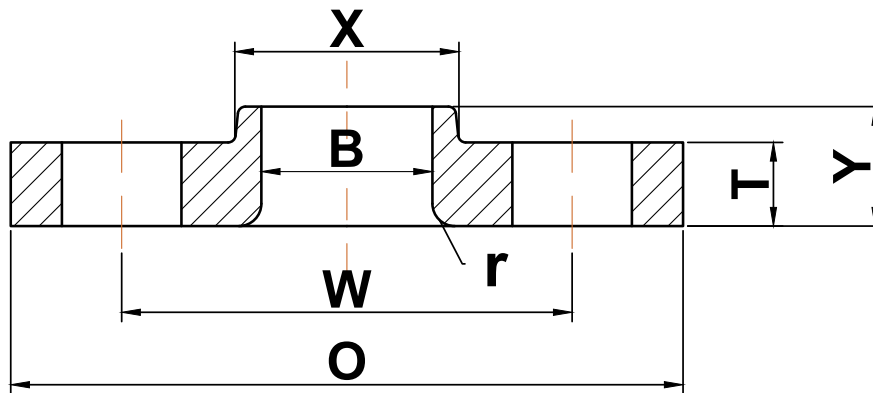




ANSI b16.5

▶ Class 150 Lap Joint Flanges



Nominal Pipe Size	Outside Diameter (O)	Bolt Circle (W)	Radius (r)	Number of Holes	Diameter of Holes	Hub Diameter (X)	Bore (B)	Thickness (T)	Length Thru Hub (Y)	Approximate Weight (lbs)
1/2	3.50	2.38	0.12	4	0.62	1.19	0.90	0.44	0.62	1
3/4	3.88	2.75	0.12	4	0.62	1.50	1.11	0.50	0.62	2
1	4.25	3.12	0.12	4	0.62	1.94	1.36	0.56	0.69	2
1 1/4	4.62	3.50	0.19	4	0.62	2.31	1.70	0.62	0.81	3
1 1/2	5.00	3.88	0.25	4	0.62	2.56	1.95	0.69	0.88	3
2	6.00	4.75	0.31	4	0.75	3.06	2.44	0.75	1.00	5
2 1/2	7.00	5.50	0.31	4	0.75	3.56	2.97	0.88	1.12	7
3	7.50	6.00	0.38	4	0.75	4.25	3.60	0.94	1.19	8
3 1/2	8.50	7.00	0.38	8	0.75	4.81	4.10	0.94	1.25	11
4	9.00	7.50	0.44	8	0.75	5.31	4.60	0.94	1.31	13
5	10.00	8.50	0.44	8	0.88	6.44	5.69	0.94	1.44	15
6	11.00	9.50	0.50	8	0.88	7.56	6.75	1.00	1.56	19
8	13.50	11.75	0.50	8	0.88	9.69	8.75	1.12	1.75	30
10	16.00	14.25	0.50	12	1.00	12.00	10.92	1.19	1.94	43
12	19.00	17.00	0.50	12	1.00	14.38	12.92	1.25	2.19	64
14	21.00	18.75	0.50	12	1.12	15.75	14.18	1.38	3.12	105
16	23.50	21.25	0.50	16	1.12	18.00	16.19	1.44	3.44	140
18	25.00	22.75	0.50	16	1.25	19.88	18.20	1.56	3.81	160
20	27.50	25.00	0.50	20	1.25	22.00	20.25	1.69	4.06	195
22	29.50	27.25	0.50	20	1.38	24.00	22.25	1.81	4.25	245
24	32.00	29.50	0.50	20	1.38	26.12	24.25	1.88	4.38	275

(a) All dimensions are in inches