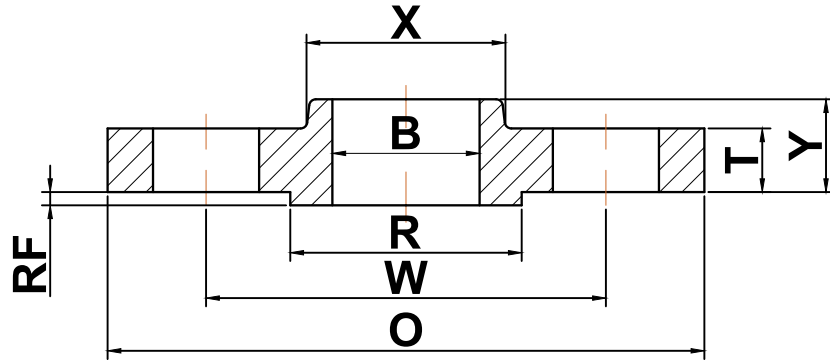




ANSI b16.5

▶ Class 300 Slip-On Flanges



Nominal Pipe Size	Outside Diameter (O)	Bolt Circle (W)	Raised Face Diameter (R)	Number of Holes	Diameter of Holes	Bore (B)	Hub Diameter (X)	Thickness (T)	Length Thru Hub (Y)	Approximate Weight (lbs)
1/2	3.75	2.62	1.38	4	0.63	0.88	1.50	0.50	0.81	2
3/4	4.62	3.25	1.69	4	0.75	1.09	1.88	0.56	0.94	3
1	4.88	3.50	2.00	4	0.75	1.36	2.12	0.62	1.00	3
1 1/4	5.25	3.88	2.50	4	0.75	1.70	2.50	0.69	1.00	4
1 1/2	6.12	4.50	2.88	4	0.88	1.95	2.75	0.75	1.13	6
2	6.50	5.00	3.62	8	0.75	2.44	3.31	0.81	1.25	7
2 1/2	7.50	5.88	4.12	8	0.88	2.94	3.94	0.94	1.44	10
3	8.25	6.62	5.00	8	0.88	3.57	4.62	1.06	1.63	13
3 1/2	9.00	7.25	5.50	8	0.88	4.07	5.25	1.12	1.69	17
4	10.00	7.88	6.19	8	0.88	4.57	5.75	1.19	1.82	22
5	11.00	9.25	7.31	8	0.88	5.66	7.00	1.31	1.94	28
6	12.50	10.62	8.50	12	0.88	6.72	8.12	1.38	2.00	39
8	15.00	13.00	10.62	12	1.00	8.72	10.25	1.56	2.38	58
10	17.50	15.25	12.75	16	1.13	10.88	12.62	1.81	2.56	81
12	20.50	17.75	15.00	16	1.25	12.88	14.75	1.94	2.82	115
14	23.00	20.25	16.25	20	1.25	14.14	16.75	2.06	2.94	165
16	25.50	22.50	18.50	20	1.38	16.16	19.00	2.19	3.19	190
18	28.00	24.75	21.00	24	1.38	18.18	21.00	2.31	3.44	250
20	30.50	27.00	23.00	24	1.38	20.20	23.12	2.44	3.69	315
22	33.00	29.25	25.25	24	1.63	22.22	25.25	2.56	3.94	370
24	36.00	32.00	27.25	24	1.63	24.25	27.62	2.69	4.13	475

(a) All dimensions are in inches

(b) These flanges will be furnished with a 1/16" raised face unless otherwise specified.