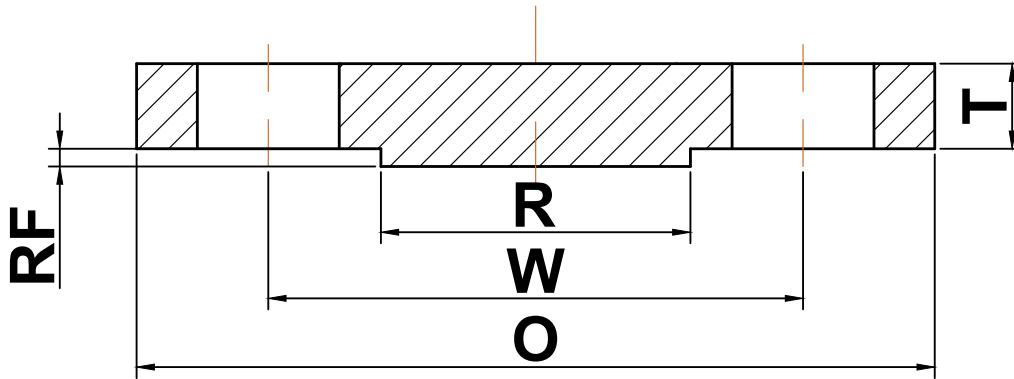




ANSI b16.5

▶ Class 400 Blind Flanges



Nominal Pipe Size	Outside Diameter (O)	Bolt Circle (W)	Raised Face Diameter (R)	Number of Holes	Diameter of Holes	Thickness (T)	Approximate Weight (lbs)
1/2	3.75	2.62	1.38	4	0.63	0.56	2
3/4	4.62	3.25	1.69	4	0.75	0.62	3
1	4.88	3.50	2.00	4	0.75	0.69	4
1 1/4	5.25	3.88	2.50	4	0.75	0.81	5
1 1/2	6.12	4.50	2.88	4	0.88	0.88	8
2	6.50	5.00	3.62	8	0.75	1.00	10
2 1/2	7.50	5.88	4.12	8	0.88	1.12	15
3	8.25	6.62	5.00	8	0.88	1.25	20
3 1/2	9.00	7.25	5.50	8	1.00	1.38	29
4	10.00	7.88	6.19	8	1.00	1.38	33
5	11.00	9.25	7.31	8	1.00	1.50	44
6	12.50	10.62	8.50	12	1.00	1.62	61
8	15.00	13.00	10.62	12	1.13	1.88	100
10	17.50	15.25	12.75	16	1.25	2.12	155
12	20.50	17.75	15.00	16	1.38	2.25	225
14	23.00	20.25	16.25	20	1.38	2.38	290
16	25.50	22.50	18.50	20	1.50	2.50	370
18	28.00	24.75	21.00	24	1.50	2.62	455
20	30.50	27.00	23.00	24	1.63	2.75	587
22	33.00	29.25	25.25	24	1.75	2.88	720
24	36.00	32.00	27.25	24	1.88	3.00	890

(a) All dimensions are in inches

(b) These flanges will be furnished with a 1/4" raised face unless otherwise specified.