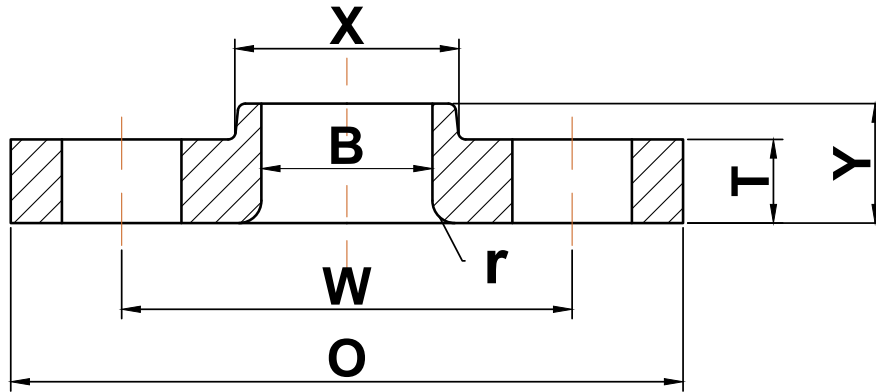




ANSI b16.5

▶ Class 600 Lap Joint Flanges



Nominal Pipe Size	Outside Diameter (O)	Bolt Circle (W)	Radius (r)	Number of Holes	Diameter of Holes	Hub Diameter (X)	Bore (B)	Thickness (T)	Length Thru Hub (Y)	Approximate Weight (lbs)
1/2	3.75	2.62	0.12	4	0.63	1.50	0.90	0.56	0.88	2
3/4	4.62	3.25	0.12	4	0.75	1.88	1.11	0.62	1.00	3
1	4.88	3.50	0.12	4	0.75	2.12	1.38	0.69	1.06	4
1 1/4	5.25	3.88	0.19	4	0.75	2.50	1.72	0.81	1.12	5
1 1/2	6.12	4.50	0.25	4	0.88	2.75	1.97	0.88	1.25	7
2	6.50	5.00	0.31	8	0.75	3.31	2.46	1.00	1.44	9
2 1/2	7.50	5.88	0.31	8	0.88	3.94	2.97	1.12	1.62	12
3	8.25	6.62	0.38	8	0.88	4.62	3.60	1.25	1.81	15
3 1/2	9.00	7.25	0.38	8	1.00	5.25	4.10	1.38	1.94	20
4	10.75	8.50	0.44	8	1.00	6.00	4.60	1.50	2.12	36
5	13.00	10.50	0.44	8	1.13	7.44	5.69	1.75	2.38	61
6	14.00	11.50	0.50	12	1.13	8.75	6.75	1.88	2.62	78
8	16.50	13.75	0.50	12	1.25	10.75	8.75	2.19	3.00	110
10	20.00	17.00	0.50	16	1.38	13.50	10.92	2.50	4.38	170
12	22.00	19.25	0.50	20	1.38	15.75	12.92	2.62	4.62	200
14	23.75	20.75	0.50	20	1.50	17.00	14.18	2.75	5.00	250
16	27.00	23.75	0.50	20	1.63	19.50	16.19	3.00	5.50	365
18	29.25	25.75	0.50	20	1.75	21.50	18.20	3.25	6.00	435
20	32.00	28.50	0.50	24	1.75	24.00	20.25	3.50	6.50	570
22	34.25	30.62	0.50	24	1.88	26.25	22.25	3.75	6.88	670
24	37.00	33.00	0.50	24	2.00	28.25	24.25	4.00	7.25	810

(a) All dimensions are in inches