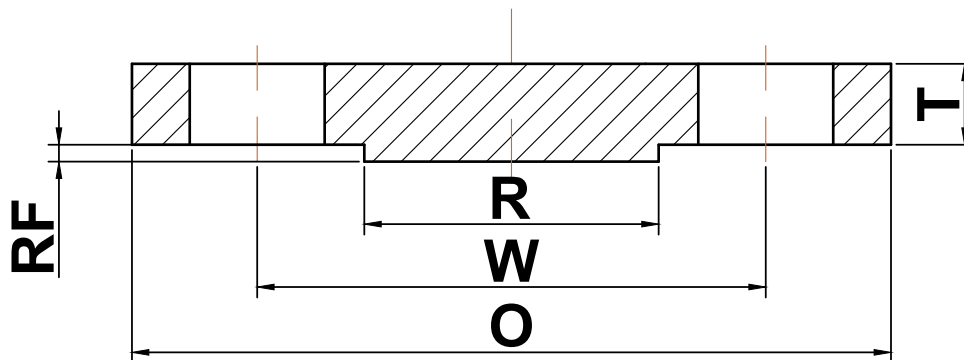


➔ ASME B16.47 series A flange

▶ Class 600 Blind Flanges



Nominal Pipe Size	Outside Diameter (O)	Bolt Circle (W)	Raised Face Diameter (R)	Number of Holes	Diameter of Holes	Minimum Thickness (T)	Approximate Weight (lbs)
26	40.00	36.00	29.50	28	2.00	4.94	1760
28	42.25	38.00	31.50	28	2.12	5.19	2061
30	44.50	40.25	33.75	28	2.12	5.50	2423
32	47.00	42.50	36.00	28	2.38	5.81	2858
34	49.00	44.50	38.00	28	2.38	6.06	3237
36	51.75	47.00	40.25	28	2.62	6.38	3800
38	50.00	45.75	41.50	28	2.38	6.12	3405
40	52.00	47.75	43.75	32	2.38	6.38	3838
42	55.25	50.50	46.00	28	2.62	6.75	4585
44	57.25	52.50	48.25	32	2.62	7.00	5105
46	59.50	54.75	50.25	32	2.62	7.31	5758
48	62.75	57.50	52.50	32	2.88	7.69	6737
50	65.75	60.00	54.50	28	3.12	8.00	7695
52	67.75	62.00	56.50	32	3.12	8.25	8425
54	70.00	64.25	58.75	32	3.12	8.56	9333
56	73.00	66.75	60.75	32	3.38	8.88	10,530
58	75.00	68.75	63.00	32	3.38	9.12	11,414
60	78.50	71.75	65.25	28	3.62	9.56	13,108

(a) All dimensions are in inches

(b) These flanges will be furnished with a 1/16" raised face unless otherwise specified.