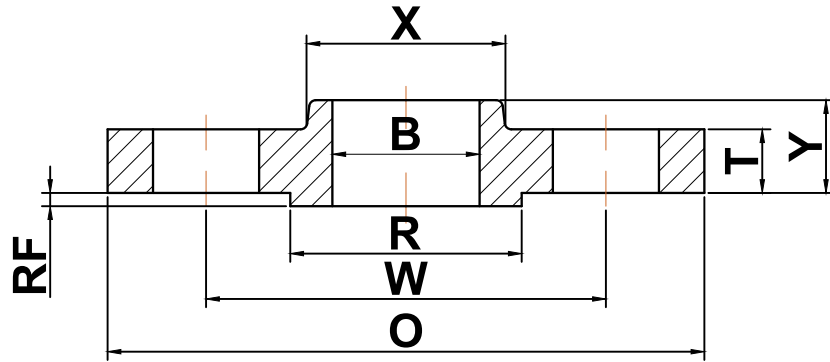




## ANSI b16.5

### ▶ Class 600 Slip-On Flanges



Nominal Pipe Size	Outside Diameter (O)	Bolt Circle (W)	Raised Face Diameter (R)	Number of Holes	Diameter of Holes	Bore (B)	Hub Diameter (X)	Thickness (T)	Length Thru Hub (Y)	Approximate Weight (lbs)
1/2	3.75	2.62	1.38	4	0.63	0.88	1.50	0.56	0.88	2
3/4	4.62	3.25	1.69	4	0.75	1.09	1.88	0.62	1.00	3
1	4.88	3.50	2.00	4	0.75	1.36	2.12	0.69	1.06	4
1 1/4	5.25	3.88	2.50	4	0.75	1.70	2.50	0.81	1.12	5
1 1/2	6.12	4.50	2.88	4	0.88	1.95	2.75	0.88	1.25	7
2	6.50	5.00	3.62	8	0.75	2.44	3.31	1.00	1.44	9
2 1/2	7.50	5.88	4.12	8	0.88	2.94	3.94	1.12	1.62	13
3	8.25	6.62	5.00	8	0.88	3.57	4.62	1.25	1.81	16
3 1/2	9.00	7.25	5.50	8	1.00	4.07	5.25	1.38	1.94	21
4	10.75	8.50	6.19	8	1.00	4.57	6.00	1.50	2.12	37
5	13.00	10.50	7.31	8	1.13	5.66	7.44	1.75	2.38	63
6	14.00	11.50	8.50	12	1.13	6.72	8.75	1.88	2.62	80
8	16.50	13.75	10.62	12	1.25	8.72	10.75	2.19	3.00	115
10	20.00	17.00	12.75	16	1.38	10.88	13.50	2.50	3.38	170
12	22.00	19.25	15.00	20	1.38	12.88	15.75	2.62	3.62	200
14	23.75	20.75	16.25	20	1.50	14.14	17.00	2.75	3.69	230
16	27.00	23.75	18.50	20	1.63	16.16	19.50	3.00	4.19	330
18	29.25	25.75	21.00	20	1.75	18.18	21.50	3.25	4.62	400
20	32.00	28.50	23.00	24	1.75	20.20	24.00	3.50	5.00	510
22	34.25	30.62	25.25	24	1.88	22.22	26.25	3.75	5.25	590
24	37.00	33.00	27.25	24	2.00	24.25	28.25	4.00	5.50	730

(a) All dimensions are in inches

(b) These flanges will be furnished with a 1/4" raised face unless otherwise specified.