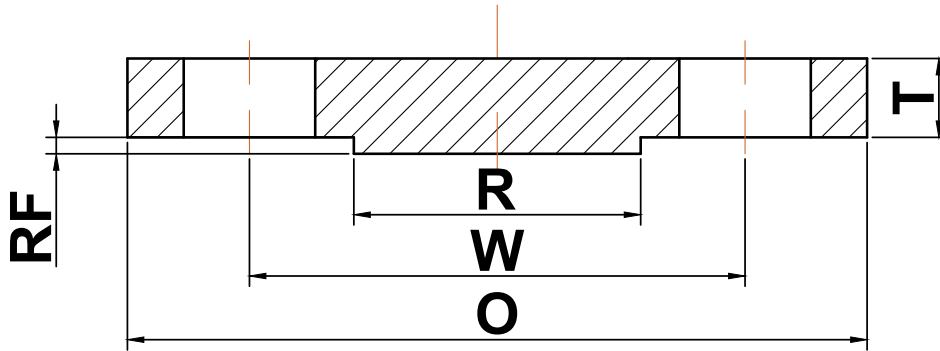


➔ ANSI B16.47 series B flange

▶ Class 75 Blind Flanges



Nominal Pipe Size	Outside Diameter (O)	Bolt Circle (W)	Raised Face Diameter (R)	Number of Holes	Diameter of Holes	Minimum Thickness (T)	Approximate Weight (lbs)
26	30.00	28.50	27.75	36	0.75	1.31	255
28	32.00	30.50	29.75	40	0.75	1.31	290
30	34.00	32.50	31.75	44	0.75	1.31	330
32	36.00	34.50	33.75	48	0.75	1.44	390
34	38.00	36.50	35.75	52	0.75	1.50	430
36	40.69	39.06	38.00	40	0.88	1.67	520
38	42.69	41.06	40.00	40	0.88	1.75	595
40	44.69	43.06	42.00	44	0.88	1.75	760
42	46.69	45.06	44.00	48	0.88	1.88	895
44	49.25	47.38	46.25	36	1.00	1.94	1065
46	51.25	49.38	48.25	40	1.00	2.00	1185
48	53.25	51.38	50.25	44	1.00	2.12	1315
50	55.25	53.38	52.25	44	1.00	2.18	1505
52	57.38	55.50	54.25	48	1.00	2.25	1665
54	59.38	57.50	56.25	48	1.00	2.38	1840
56	62.00	59.88	58.50	40	1.12	2.44	2111
58	64.00	61.88	60.50	44	1.12	2.50	2300
60	66.00	63.88	62.50	44	1.12	2.62	2500

(a) All dimensions are in inches

(b) These flanges will be furnished with a 1/16" raised face unless otherwise specified.