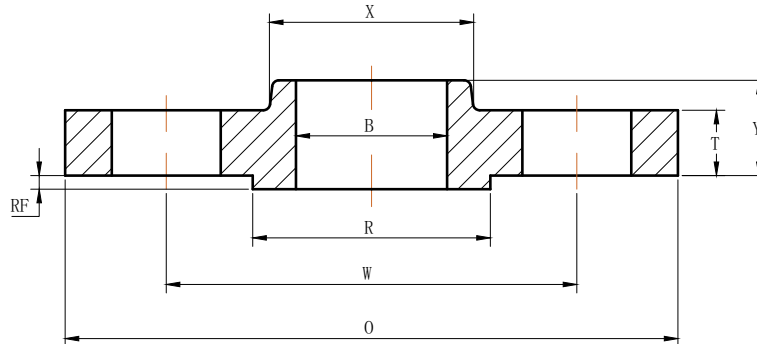




ANSI b16.5

▶ Class 900 Slip-On Flanges



Nominal Pipe Size	Outside Diameter (O)	Bolt Circle (W)	Raised Face Diameter (R)	Number of Holes	Diameter of Holes	Bore (B)	Hub Diameter (X)	Thickness (T)	Length Thru Hub (Y)	Approximate Weight (lbs)
1/2	4.75	3.25	1.38	4	0.88	0.88	1.50	0.88	1.25	4
3/4	5.12	3.50	1.69	4	0.88	1.09	1.75	1.00	1.38	5
1	5.88	4.00	2.00	4	1.00	1.36	2.06	1.12	1.62	8
1 1/4	6.25	4.38	2.50	4	1.00	1.70	2.50	1.12	1.62	9
1 1/2	7.00	4.88	2.88	4	1.13	1.97	2.75	1.25	1.75	12
2	8.50	6.50	3.62	8	1.00	2.46	4.12	1.50	2.25	25
2 1/2	9.62	7.50	4.12	8	1.13	2.97	4.88	1.62	2.50	36
3	9.50	7.50	5.00	8	1.00	3.57	5.00	1.50	2.12	26
4	11.50	9.25	6.19	8	1.25	4.57	6.25	1.75	2.75	53
5	13.75	11.00	7.31	8	1.38	5.66	7.50	2.00	3.12	83
6	15.00	12.50	8.50	12	1.25	6.72	9.25	2.19	3.38	110
8	18.50	15.50	10.62	12	1.50	8.72	11.75	2.50	4.00	170
10	21.50	18.50	12.75	16	1.50	10.88	14.50	2.75	4.25	245
12	24.00	21.00	15.00	20	1.50	12.88	16.50	3.12	4.62	325
14	25.25	22.00	16.25	20	1.63	14.14	17.75	3.38	5.12	400
16	27.75	24.25	18.50	20	1.75	16.16	20.00	3.50	5.25	425
18	31.00	27.00	21.00	20	2.00	18.18	22.25	4.00	6.00	600
20	33.75	29.50	23.00	20	2.13	20.20	24.50	4.25	6.25	730
24	41.00	35.50	27.25	20	2.63	24.25	29.50	5.50	8.00	1400

(a) All dimensions are in inches

(b) These flanges will be furnished with a 1/4" raised face unless otherwise specified.